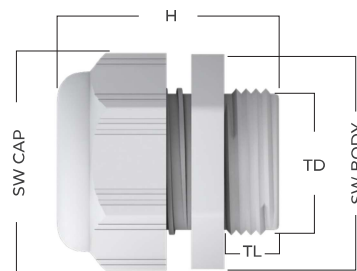
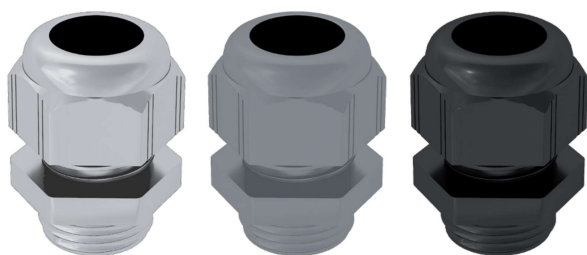


Polyamide Cable Gland With Closing Seal



TECHNICAL INFORMATION

- MATERIAL :** POLYAMIDE 6
- STANDARD :** EN 62444
- THREAD TYPE :** METRIC EN 60423, PG DIN 40430
- PROTECTION CLASS :** IP 68 / 5 BAR
- OPERATING TEMPERATURE :** -30°C /+100°C, -40°C /+150°C (SHORT TERM)
- FLAMMABILITY CLASS :** UL94V2
- COLOR :** GREY (RAL 7001), BLACK (RAL 9005), LIGHT GREY (RAL 7035)
- SEAL :** TPV, (CHLOROPRENE IS OPTIONAL)
- CLOSING SEAL :** TPV
- CERTIFICATE :** CE, ROHS

FEATURES

- GOOD CLAMMING RANGE | HALOGEN FREE | SULPHUR FREE
- PHOSPHORUS FREE | UL 94 V2 FLAME RETARDANCY
- HIGH MECHANICAL STRENGTH | EASY INSTALLATION
- HIGH STRAIN RELIEF | BEST GRADE MATERIAL

APPLICATIONS

- MACHINE BUILDINGS | AUTOMATION SYSTEMS
- AUTOMOTIVE (WIRE HARNESS) | SOLAR SYSTEMS
- CONSTRUCTION | CCTV | MARINE , SHIPYARD
- ROBOT INDUSTRY

Standard Thread

GREY CODE	BLACK CODE	LIGHT GREY CODE	SIZE	CLAMMING RANGE (MM)	TD (MM)	TL (MM)	SW BODY (MM)	SW CAP (MM)	H (MM)	
TMOK-05-G	TMOK-05-S	TMOK-05-AG	M12X1,5	3,0-6,5	12,0	8,0	15,0	15,0	23,0	400
TMOK-01/1-G	TMOK-01/1-S	TMOK-01/1-AG	M16X1,5	4,0-8,0	16,0	8,0	19,0	19,0	26,0	300
TMOK-01-G	TMOK-01-S	TMOK-01-AG	M16X1,5	5,0-10,0	16,0	10,0	22,0	22,0	30,0	200
TMOK-02-G	TMOK-02-S	TMOK-02-AG	M20X1,5	6,0-12,0	20,0	10,0	24,0	24,0	30,0	150
TMOK-02S-G	TMOK-02S-S	TMOK-02S-AG	M20X1,5	10,0-14,0	20,0	10,0	27,0	27,0	33,0	120
TMOK-05-G	TMOK-05-S	TMOK-05-AG	M25X1,5	13,0-18,0	25,0	10,0	33,0	33,0	38,0	75
TMOK-07-G	TMOK-07-S	TMOK-07-AG	M32X1,5	18,0-25,0	32,0	10,0	42,0	42,0	42,0	40
TMOK-08-G	TMOK-08-S	TMOK-08-AG	M40X1,5	22,0-32,0	40,0	10,0	53,0	53,0	52,0	20
TMOK-09-G	TMOK-09-S	TMOK-09-AG	M50X1,5	30,0-38,0	50,0	18,0	60,0	60,0	54,0	12
TMOK-10-G	TMOK-10-S	TMOK-10-AG	M63X1,5	34,0-44,0	63,0	18,0	65,0	65,0	53,5	8

Standard Thread

GREY CODE	BLACK CODE	LIGHT GREY CODE	SIZE	CLAMMING RANGE (MM)	TD (MM)	TL (MM)	SW BODY (MM)	SW CAP (MM)	H (MM)	
TPOK-01-G	TPOK-01-S	TPOK-01-AG	PG-7	3,0-6,5	12,5	8,0	15,0	15,0	23,0	400
TPOK-02-G	TPOK-02-S	TPOK-02-AG	PG-9	4,0-8,0	15,2	8,0	19,0	19,0	26,0	300
TPOK-03-G	TPOK-03-S	TPOK-03-AG	PG-11	5,0-10,0	18,6	8,0	22,0	22,0	29,0	200
TPOK-04-G	TPOK-04-S	TPOK-04-AG	PG-13,5	6,0-12,0	20,4	10,0	24,0	24,0	30,0	150
TPOK-05-G	TPOK-05-S	TPOK-05-AG	PG-16	10,0-14,0	22,5	10,0	27,0	27,0	33,0	120
TPOK-06-G	TPOK-06-S	TPOK-06-AG	PG-21	13,0-18,0	28,3	10,0	33,0	33,0	38,0	75
TPOK-07-G	TPOK-07-S	TPOK-07-AG	PG-29	18,0-25,0	37,0	11,0	42,0	42,0	43,0	40
TPOK-08-G	TPOK-08-S	TPOK-08-AG	PG-36	22,0-32,0	47,0	14,0	53,0	53,0	52,0	20
TPOK-09-G	TPOK-09-S	TPOK-09-AG	PG-42	30,0-38,0	54,0	14,0	60,0	60,0	53,0	12
TPOK-10-G	TPOK-10-S	TPOK-10-AG	PG-48	34,0-44,0	59,3	14,0	65,0	65,0	53,0	8